



**FOSTER**  
& **CO.**

# Hunstanton Close

Crawley, RH11 0UG

**Asking price £175,000**

Set in the area of Hunstanton Close, Ifield, Crawley, this end terrace house presents an excellent opportunity for first-time buyers seeking a project to make their own. With one reception room, one bedroom and separate private garden.

While the property is in need of modernisation, this presents a unique chance to personalise the space according to your tastes and preferences. With a little creativity and effort, you can transform this house into a stylish and comfortable home that reflects your individual style.

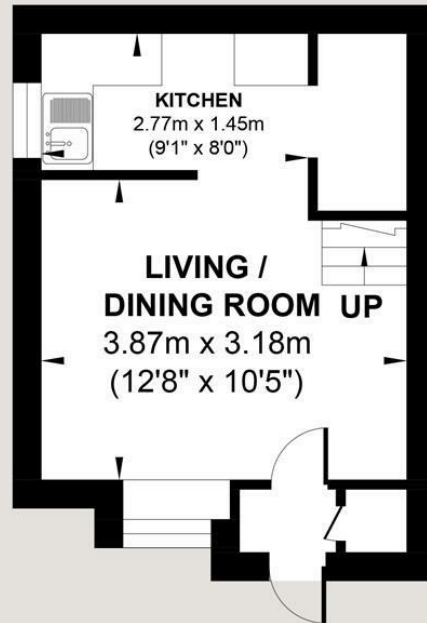
Situated in a friendly neighbourhood, this property is conveniently located near local amenities, making it an ideal choice for those looking to settle in a welcoming community. Embrace the potential and make this house your home.



Energy Efficiency Rating		
	Current	Potential
<i>Very energy efficient - lower running costs</i>		
(92 plus) <b>A</b>		
(81-91) <b>B</b>		
(69-80) <b>C</b>		
(55-68) <b>D</b>		
(39-54) <b>E</b>		
(21-38) <b>F</b>		
(1-20) <b>G</b>		
<i>Not energy efficient - higher running costs</i>		
England & Wales		EU Directive 2002/91/EC

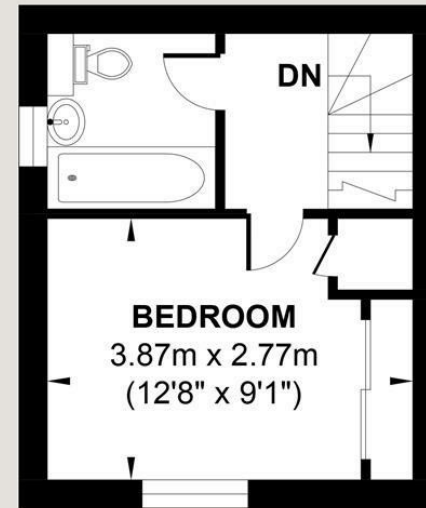
## HUNSTANTON CLOSE

Approx. Gross Internal Floor Area = 38.50 sq m / 414.41 sq ft  
Illustration for identification purposes only, measurements are approximate, not to scale.



GROUND FLOOR

**Approximate Floor Area**  
217.32 sq ft  
(20.19 sq m)



FIRST FLOOR

**Approximate Floor Area**  
197.08 sq ft  
(18.31 sq m)



Foster & Co and their clients give notice that:

These sales particulars do not constitute any part of an offer of contract and are for guidance for prospective purchases only and should be not relied upon as a statement of fact.

We are not to be held responsible for material information that has not been given to us by our client at the time of marketing.

All measurements are approximate



